

# Installing Demo Model 1 for Open Rails v1.0

## Contents

|                                |   |
|--------------------------------|---|
| Short Instructions .....       | 1 |
| Illustrated Instructions ..... | 2 |

## Short Instructions

These instructions assume you have already installed Open Rails v1.0

These instructions are repeated with screen shots after this page.

- Unzip the contents of *Demo Model 1.zip* into a convenient folder  
- e.g. C:\Open Rails Content\
- The content contains the folder *Demo Model 1*
- Start *Open Rails* and choose *Options > Content > Add* to find the folder *Demo Model 1*
- Click *OK* to return to the main menu.

At this point you can choose *Start* which will load the route and allow you to drive a train. You are running the simulation in "Explore" mode which provides just a single train but allows you full control over where you go. Signals will be green and switches (points) can be changed.

However ***we recommend*** that first you select the activity from the *Activity*: drop-down.

### 09:30 Edinburgh to Glasgow Queen Street

Now when you choose *Start*, the route loads and you are in charge of the 09:30 service. In this "Activity" mode, you must respect the signals and the speed limits, other trains will be passing, your route is pre-determined and you will be prompted (see below) with help for the controls as you go along.

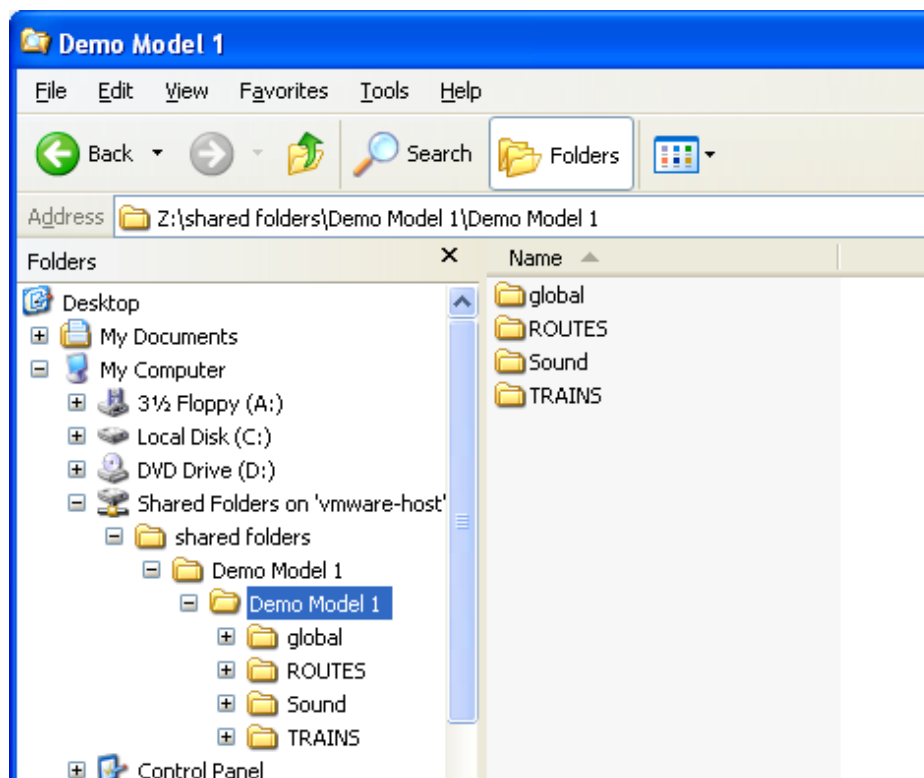
This demonstration journey takes about 20 minutes. The OpenRails.org website links to a video of the journey with commentary.

## Illustrated Instructions

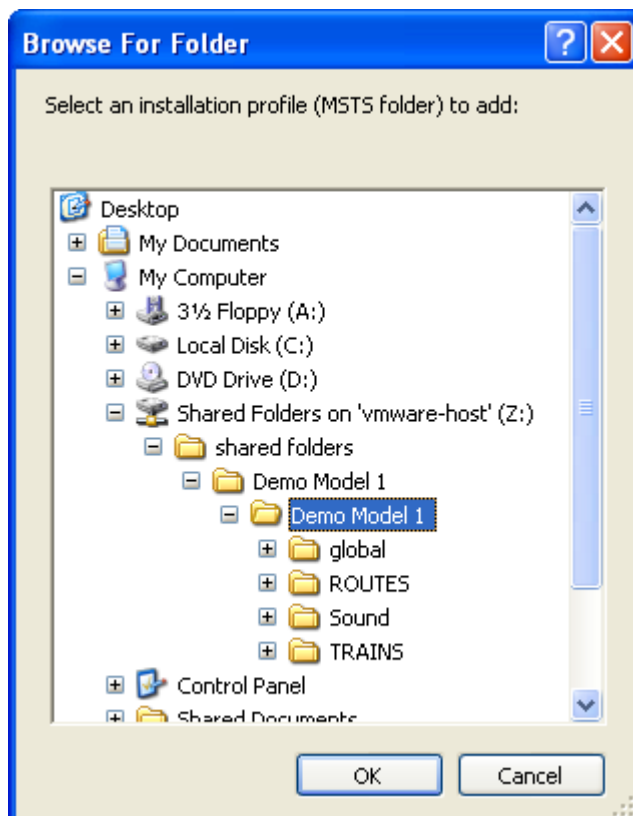
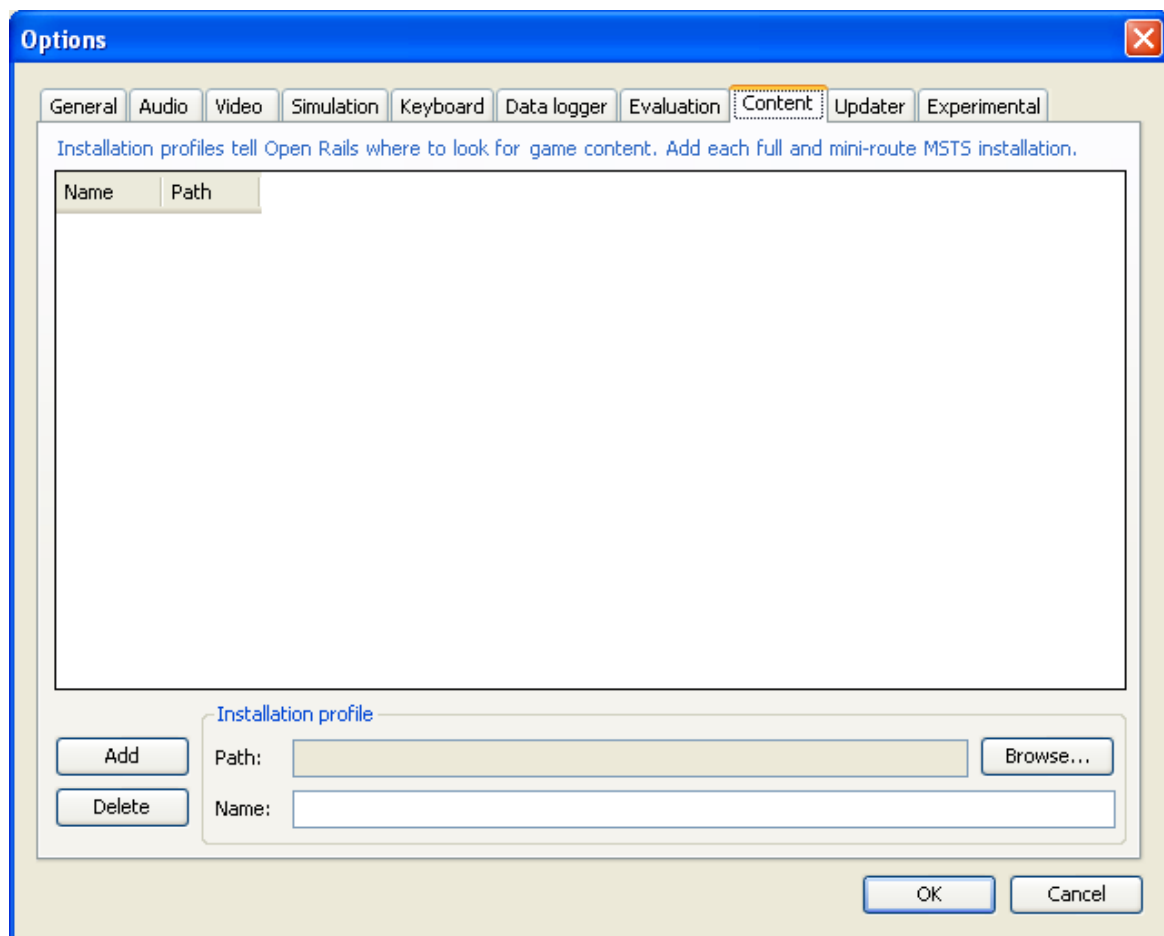
These instructions assume you have already installed Open Rails v1.0.

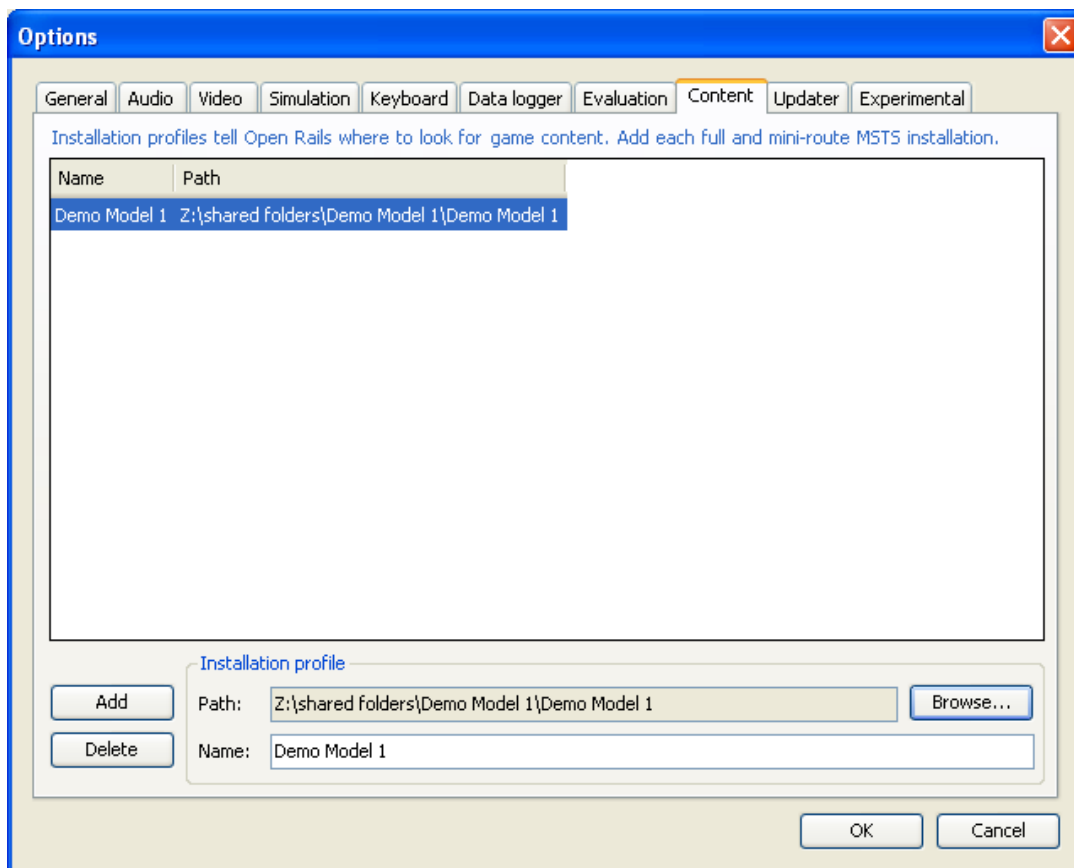
Unzip the contents of *Demo Model 1.zip* into a convenient folder - e.g. C:\Open Rails Content\

The content contains the folder *Demo Model 1*

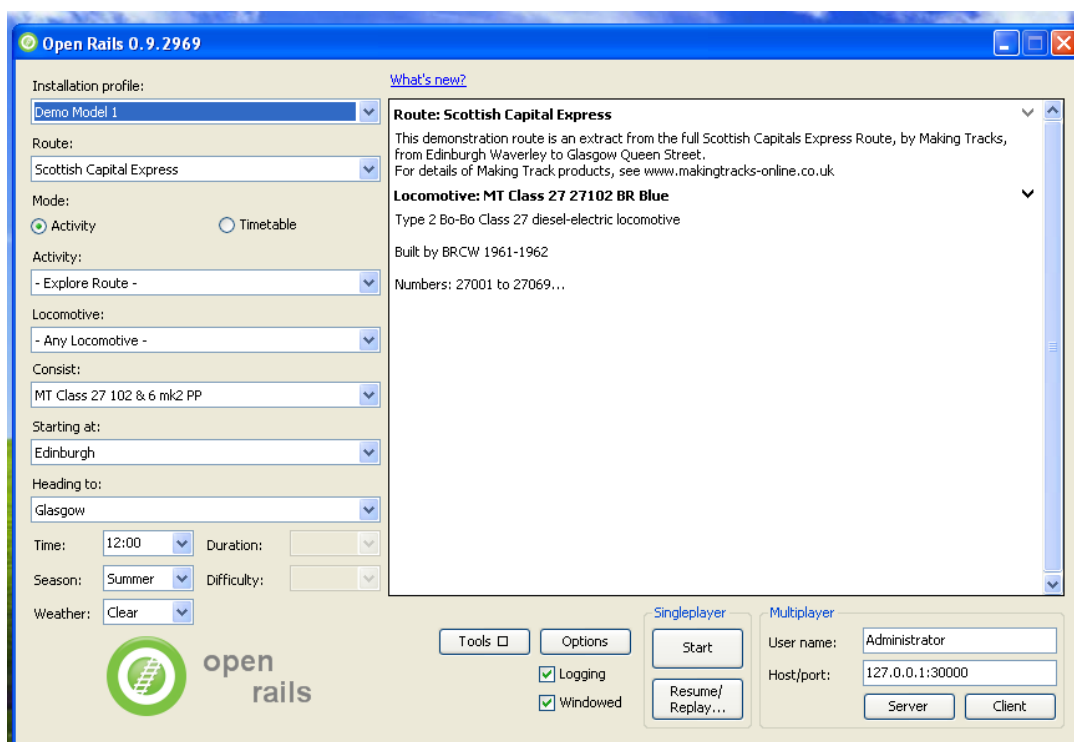


Start *Open Rails* and choose *Options > Content > Add* to find the folder *Demo Model 1*





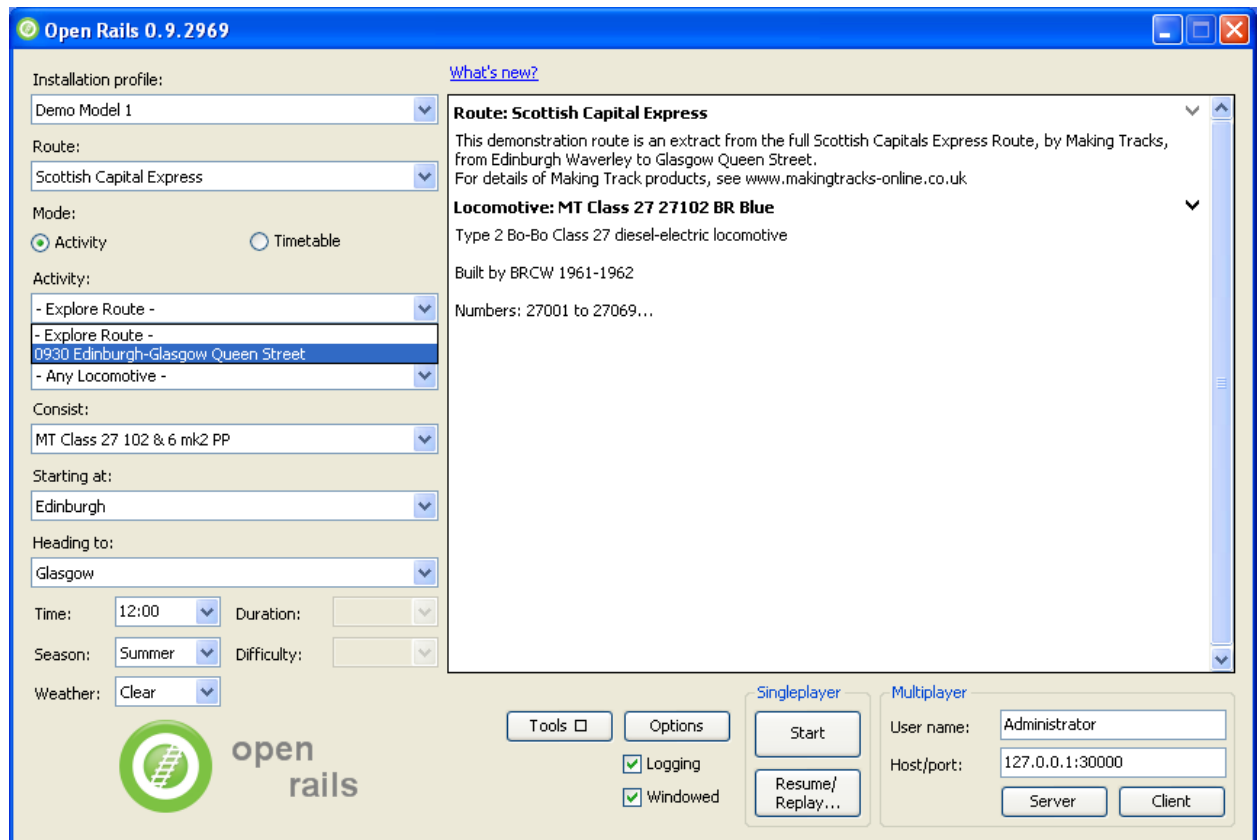
Click *OK* to return to the main menu.



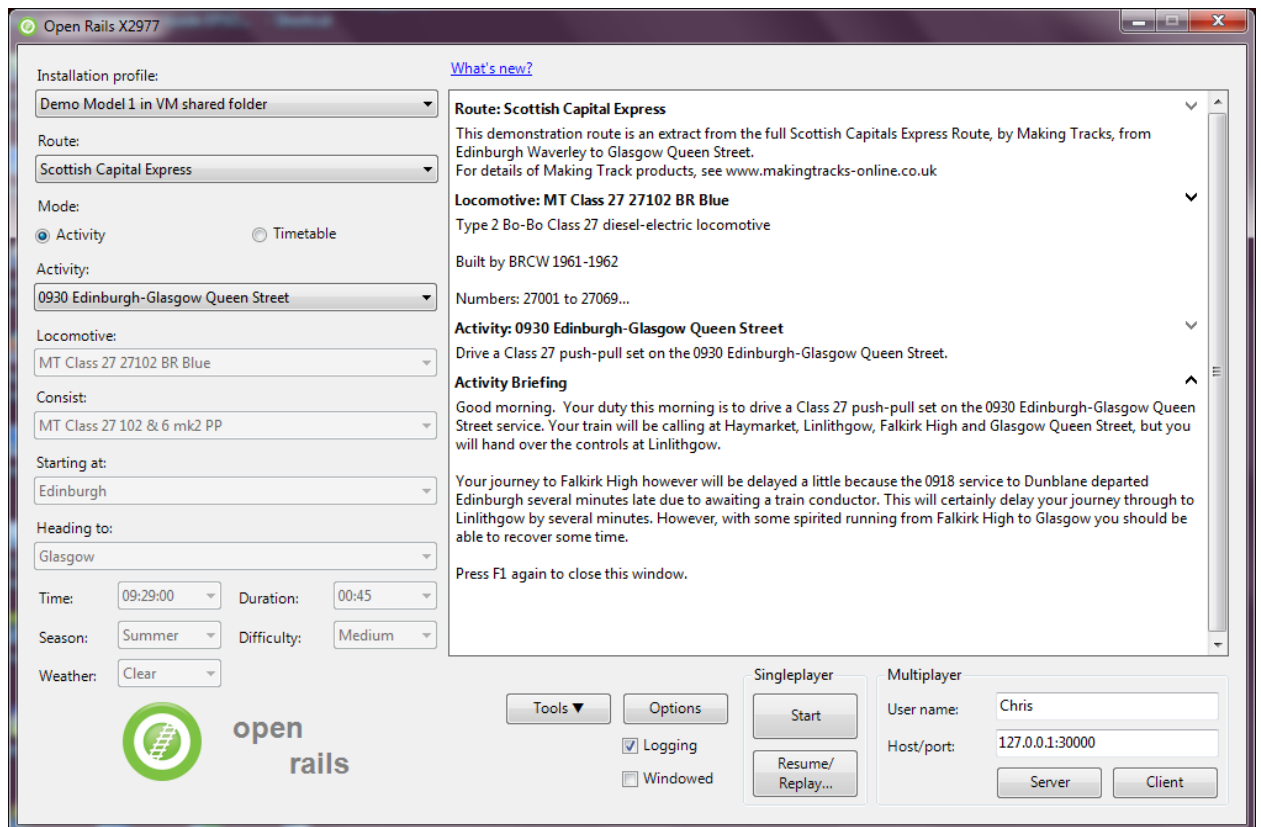
At this point you can choose *Start* which will load the route and allow you to drive a train. You are running the simulation in "Explore" mode which provides just a single train but allows you full control over where you go. Signals will be green and switches (points) can be changed.

However ***we recommend*** that first you select the activity from the *Activity:* drop-down.

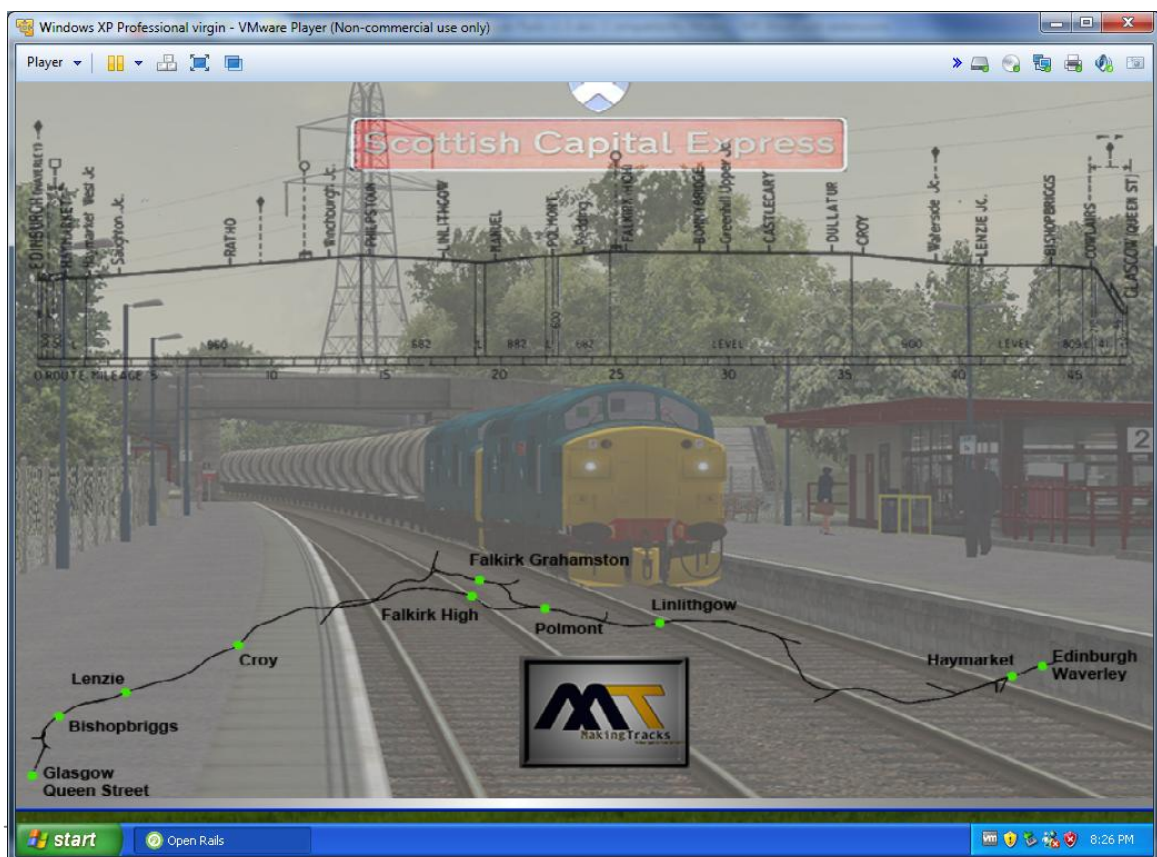
### 09:30 Edinburgh to Glasgow Queen Street



and details of the activity will be listed in the panel on the right.



Now when you choose *Start*, the route loads and you are in charge of the 09:30 service.



In this "Activity" mode, you must respect the signals and the speed limits, other trains will be passing, your route is pre-determined and you will be prompted (see below) with help for the controls as you go along.



This demonstration journey takes about 20 minutes. The OpenRails.org website links to a video of the journey with commentary.

This demonstration journey takes about 20 minutes.